

SOIL AND WATER CONSERVATION SOCIETY

Inland Empire Chapter *Spring 2003*



SPRING MEETING

Tuesday, May 6, 2003

*Meeting Location: Moscow NRCS Field Office
Federal Building
220 East 5th St.
Moscow, ID 83843*

PH: (208) 882-4960

*The Spring Meeting Topic:
Analysis, Management and Monitoring of the Paradise Creek Watershed.*

- 9:00 A.M.** Registration..... Esther Patterson, Chapter Treasurer
- 9:30 A.M.** Welcome..... Bill Elliot, Southern Idaho Panhandle Director
- 9:35 A.M.** SWCS Chapter Business Meeting..... Valerie Oksendahl, Chapter President
- 10:15 A.M.** Clean Water Act Processes..... Tom Dechert, Idaho Department of Environmental Quality
- 10:30 A.M.** Watershed Analysis Bill Dansart, Idaho Soil Conservation Commission
- 10:45 A.M.** Watershed Management..... Lee Hawley, Watershed Advisory Committee
- 11:05 A.M.** Watershed Management..... Mark Cook, Moscow Sewage Treatment Plant
- 11:30 A.M.** Watershed Monitoring..... Jan Boll, University of Idaho
- 11:55 A.M.** Open Discussion
- 12:00 P.M.** Lunch & Raffle Drawing for Lake Roosevelt Fishing Trip
- 1:00 P.M.** Depart Meeting Site
- 1:15 P.M.** Monitoring Site near Treatment Plant Jan Boll and Mark Cook
- 2:00 P.M.** Monitoring Site near Darby Road Jan Boll
- 2:45 P.M.** Improved Farming Practices Site Lee Hawley
- 3:15 P.M.** Depart Improved Farming Practices Site
- 3:30 P.M.** Stream Channel Restoration Tom Lamar, Palouse-Clearwater
Environmental Institute
- 4:00 P.M.** Closing Discussion
- 4:15 P.M.** Adjourn

**BE INVOLVED IN THE 2003
INTERNATIONAL
CONFERENCE**

As hosts for the 2003 International Conference in Spokane there is a lot to be done and we need volunteers. This is your opportunity to support the chapter and be involved in an international conference. Contact Ann Swannack at (509) 648-3680 to find out how you can help. We are going to have a great conference - don't miss out!

CHAPTER CONTACTS

President:
Valerie Oksendahl
(509) 323-2976
e-mail: valerie.oksendahl@wa.usda.gov

Vice President:
Larry Cooke
(509) 323-2964
e-mail: larry.cooke@wa.usda.gov

Treasurer:
Esther Patterson
(509) 925-6255
e-mail: enpatt@elltel.net

Secretary:
Ann Swannack
(509) 648-3680
e-mail: ann.swannack@wa.usda.gov

PRESIDENT'S MESSAGE

Presidents Message,

Thank you for your support during the past year. It was a pleasure serving as President of the Inland Empire Chapter (IEC).

The IEC has made great strides during my term as President. The chapter continues with the planning of the International Meeting (to be held in Spokane July 26-30, 2003). In addition to these planning efforts, the IEC has accomplished the following:

- Twelve new members and four students majoring in conservation related fields were sponsored and recruited into the IEC this past year.
- Three of the five area directors are from outside of NRCS, which provides diversity on the Executive Board.
- Three chapter members conducted seminars at one community college and two universities on the benefits of membership in a professional society.
- One technical workshop was presented in cooperation with the Spokane County Conservation District
- One professional workshop on Chapter Development & Membership was presented in cooperation with the West Region Executive Director, the SWCS Executive President and the Natural Resources Conservation Service.
- The IEC is working towards establishing a scholarship program for students in all colleges in East Washington and North Idaho. \$362.00 was raised for educational outreach by holding the Chapter's 1st "Silent Auction".
- Two additional Executive Board meetings (total 4) were held in 2002 in order to ensure new officers were provided position descriptions, duties, and review the annual report and goals for the upcoming year.
- The Chapter, represented on the Verle Kaiser Scholarship Board of Directors, dispersed 6 scholarships in the amount of \$9,000 this past year. The IEC also contributed \$200.00 for area youth to attend the Inland Empire Natural Resource Camp.

The IEC is hosting a great Spring Meeting in Moscow, Idaho on May 6th. Your new officers, Gary Mitchell, Northern Washington Director, William Elliott, Southern Idaho Panhandle Director, Steve Durgin, Vice-President, and Larry Cooke, President, will be sworn in. Please plan to attend, bring an associate and save on your registration (see registration details)! Again, I thank you for your support during the year. It has been a pleasure.

Sincerely

Valerie Oksendahl, IEC Chapter President

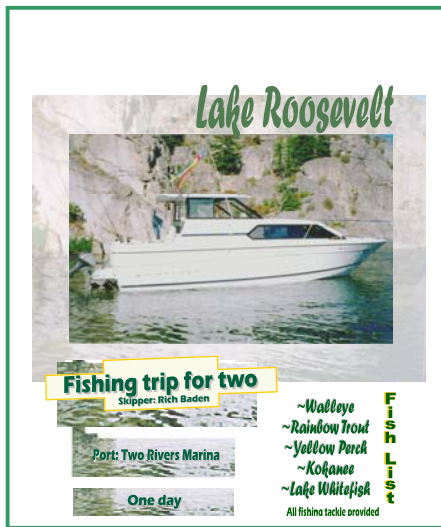
P.S. Register today for the 2003 conference by going to the SWCS web-site: <http://www.swcs.org>.

WELCOME NEW MEMBERS

Kootenai-Shoshone SWCD
Neil Peterson
David Kreft
Renee Rathkee
James Fox
Alfonso Garcia
Jason Hair
Emmy Sunleaf
Kathy Hair
Gary Mitchell
John Hair

58th ANNUAL CONFERENCE LOCAL ARRANGEMENTS COMMITTEE

Co-Chairs:	Larry Cooke (509) 323-2964	Hospitality:	Mike Klungland (509) 659-0254
	Dennis Roe (509) 397-4636	Media/Publicity:	Betty Schmitt (509) 323-2912
Facility:	Steve Durgin (509) 323-2957	Registration:	Shawn Woodard (509) 323-2986
Finance:	Valerie Oksendahl (509) 323-2976	Technology:	Maggie Addington (509) 323-2945
Activities:	Shelly Lassiter (509) 323-2987	Transportation:	Ron Myhrum (509) 323-2982
Conservation Tours:	Larry Hooker (509) 522-6340	Volunteers:	Ann Swannack (509) 648-3680
Exhibits:	Roger Veseth (208) 885-6386		



Reminder:
 Contact Ann Swannack at (509) 648-3680 for Lake Roosevelt fishing trip raffle tickets.

Please donate homemade or purchased wares for the 2003 Conference Youth /Teen and Adult Silent Auction!
 Contact Barbara Bolick at 786-1923 (3) or Shellan Dawson (208) 762-4939 (101) for details.



Resister today at: <http://www.swcs.org>

INLAND EMPIRE CHAPTER HOSTS ANOTHER INTERNATIONAL ANNUAL CONFERENCE

by Larry Cooke, Conference Co-Chair

Many of us remember, back in 1978, when the Inland Empire Chapter submitted a bid to host the 1981 International Conference. Our bid was accepted and the membership rallied and hosted a wonderful event that was attended by over 1,200 people. We showcased our Chapter area including the Palouse farming region. At that time, the Palouse area was one of 6 "USDA Targeted" areas in the US that received special funds to address resource concerns. Verle Kaiser led several busloads of people throughout the Palouse. The beauty and challenges that this unique area presents amazed them.

Once again, 22 years later, the Inland Empire Chapter has been selected to host another International Conference. The Conference is scheduled for July 26 - July 31 2003 at the Spokane Center. We have a great Local Arrangements Committee working hard to once again "showcase" our Chapter area. We anticipate 1,500 people coming into Spokane for a week of education, touring and fun. This will be the 58th annual conference with the theme being: "The Columbia - Conserving a Legacy of Life." The theme will be woven into four key topics:

- Integrated Watershed and Basin Management
- Water Supplies for Ecology and Economy
- Grassland Health for Sustainable Production and Biological Diversity
- Air Quality for Public Health and Economic Vitality

Our Chapter will play a key leadership role during this important meeting. We urge your participation and are asking for all chapter members to step forward and volunteer your services for tasks that need to be completed now and during the conference. These tasks range from stuffing envelopes to participating in various planning committees to obtaining sponsorships for various events and meeting with and hosting conservation leaders from around the world. What an opportunity for professional development and to build up our Chapter with new conservationists with new ideas who will lead us into the next 22 years.

Spring Meeting Registration
May 6, 2003

Moscow NRCS Field Office
Federal Building
220 East 5th St.
Moscow, ID 83843-2964

PH: (208) 882-4960

Name: _____ Representing: _____

Address: _____

City: _____ State: _____ Zip: _____

Advanced Registration - \$25.00 SWCS members \$30.00 non-members
At the Door - \$30.00 SWCS members \$35.00 non-members

***Special:** Bring an associate and pay \$10.00 registration.

Because this program includes a box lunch, we need to receive your registration by **Tuesday April 29, 2003** to provide an accurate count.

No refunds will be issued after May 1, 2003.

Send registration form and check payable to:

Inland Empire Chapter - SWCS
c/o Esther Patterson, Treasurer
P.O. Box 1145
Ellensburg, WA 98926

(509) 925-6255

Inland Empire Chapter, SWCS
Ann Swannack
P.O. Box 438
Saint John, WA 99171



Our Chapter's Website is:
<http://nacdn.net.org/inland-empire-swcs>